

System 73 89 999 00
[price](#)

alternator / electronic ignition for [BMW R27](#)  12V
180W

INFO new system with improved starting capabilities replacing discontinued system [70 89 999 00](#)



Magnet based generator with integrated solid state ignition. Output at 12V/180W DC. Ignition with own power supply from within the system.

Replaces stock 6 Volts dynamo [LJ/CJE/60/6/1800/R5](#) and regulator as well as all ignition parts.

Does not require changes on crankcase. The system is technically capable of running [without battery](#).

advantage over original system:

- all parts are new
- solid state ignition and advance
- much more light output ([with light bulb 40/45W](#))
- very stable ignition with solid spark
- better starting, better fuel burning
- no wear anymore on collector, governor and points

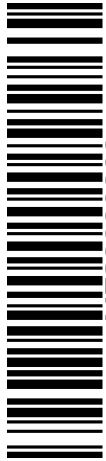
documentation:

- [assembly instructions](#)
- [wiring diagram of the new system](#)
- [parts in the pack](#)

photos:

most showing older version

- [R27 with the system](#)
- [the new stator during assembly](#)
- [ignition timing](#)
- [wire exit](#)
- [fastening of the new ignition coil](#) by using of [a \(self-made\) bracket](#)
- [fastening of the advance unit and regulator](#) by using of [a \(self-made\) bracket](#)
- the simplest solution: [regulator and advance unit in an empty battery housing](#)
- [all fits under the cover](#)



M738999900

If you can install and time a stock ignition and possess basic mechanical skills, you can install a VAPE system!

If you never have worked on your ignition, better have it done by someone who knows.

VAPE can not monitor the compliance to those instructions, nor the conditions and methods of installation, operation, usage and maintenance of the system. Improper installation may result in damage to property and possibly even bodily injury. Therefore we assume no responsibility for loss, damage or cost which result from, or are in any way related to, incorrect installation, improper operation, or incorrect use and maintenance. We reserve the right to make changes to the product, technical data or assembly and operating instructions without prior notice.

Please read these instructions fully and carefully before starting work on your motorcycle

Please bear in mind that [any modification of the material as well as own repair attempts which have not been agreed with VAPE may result in a loss of warranty. Do not cut off wires. This leads to a loss of reverse polarity protection and often results in damage to electronics.](#)

Also, please take note of the information provided on the information page for this system. Check that what you have bought really corresponds to the motorcycle you have. Wrong ignition settings may damage your engine and even hurt you during kickstart (violent kickbacks). Be careful during the first test runs. If needed change settings to safer values (less advance). During assembly check carefully that the [rotor \(flywheel\) does not touch the stator coils or anything else](#), which may happen due to various circumstances and lead to severe damage.



IMPORTANT:

Designated use

This system is designated to replace stock dynamo/alternator & ignition systems in vintage and classic motorcycles [whose engine characteristics have not been modified aftermarket](#). This system is not a tuning system and it will not bring significant increases in engine output. It does however significantly enhance roadworthiness and comfort by offering better lighting, better function of side indicators and horn and, compared with the aging stock systems, increased reliability. As our system does not tamper with engine characteristics it does not increase emission of gaseous pollutants and noise. In most cases emission of pollutants should even be reduced due to better combustion. If used as designated the system therefore will not normally infringe the existing legal status of the motorcycle (this statement is valid for Germany, for other countries, please check locally against your road licensing regulations). This system is not suitable for use in competition events. If used other than the designated way, warranty will be voided and it might well be that you do not obtain the desired results or, worst you loose legal roadworthiness.

The charging system is only suitable for use with rechargeable 12V (6V systems 6V) lead-acid batteries with liquide electrolyte or sealed lead-acid batteries, AGM, Gel. [It is not suitable for use with nickel-cadmium, nickel-metal-hydride, lithium-ion or any other types of recharchable or non rechargeable batteries.](#)

This is a [replacement system and not a copy of the stock material](#). The parts in this system therefore look different and might fit differently (notably ignition coil and regulator) requiring some adaptation by you.


During assembly imperatively start with assy of engine based parts to see that those really fit before you start fitting the external parts. In many cases customers assemble those first and thereby often [modify them in breach of warranty](#) which renders them unfit for renewed sale. [Replacing old ignition systems is not a matter of taking something from a supermarket shelf as there have been very many types, versions and possibly unknown aftermarket modifications which harbour plenty of room for error.](#)

Our systems are [NOT tested for use with third party electronic devices \(such as GPS, mobile phones, LED lighting etc\)and may cause damage to such parts.](#) Possibly existing [electronic tachometers](#) will not work with the new system. Read our [information for suitable solutions](#). Possibly existing safety switches and electronic valve controls are not supported. It might be that your motorcycle was originally equipped with an ignition that did limit top speed for legal reasons. The new system does not have such a facility, so check your legal situation beforehand.

If you have no expertise for the installation have it done by an expert or at a specialist's workshop. Improper installation may damage the new system and your motorcycle, possibly even lead to bodily harm.

Before you order a system, please check whether a [puller tool](#) for the new rotor is included in the kit. If not, better order it at the same time. You might want to order light [bulbs](#), [fuse](#), horn, [flasher unit](#) etc. Never use anything other than the recommended puller tool to pull the new rotor again. Damage to the rotor as a result of use of other tools or methods is not covered by warranty.

The rotor is sensible to blows (including during transport). Before assembly, please always check for damage (on rotor without magnet plastification try to push the magnets aside with your fingers). After impact the glued in magnets might have broken loose, sticking to the rotor solely by magnetic force, so that one does not notice right away. During engine run the damage would be considerable. Before placing the rotor onto the engine, please make sure that its magnets have not

	collected any metal objects such as small screws, nuts and washers. That equally would lead to severe damage.
 Internet	If you have access to the Internet, best view those instructions online. You get larger and better pictures by clicking onto them and possibly updated information. System list at http://www.powerdynamo.biz

You should have received those parts:



- rotor / fastening screw
- pre-assembled stator unit
- regulator/rectifier
- advance unit (black box)
- electronic ignition coil / ht-cable
- bits & pieces for fastening



There is no need to take the stator from the ground plate. You only risk damage to the coil and/or wires beneath.



To disengage your new rotor again, you will need a puller M27x1.25 (part-no.: 99 99 799 00 -**Not provided!**-).

Note: Never use a claw puller, a hammer or any other device, that will shake the magnets off.



To pull the old rotor, you will need a puller tool M8x90 (part-no.: 70 80 899 90 -**Not provided!**-).

Important note: The BMW R27 has stock battery ignition. The new VAPE system is a magneto ignition. The advantage is obvious but there's also a downside and important difference that has to be observed.

The kick starter has to be actuated strong and quickly to bring the engine into proper revs. If you actuate it too slow - as it may have been possible with the old battery ignition - it would not start. This is because the magneto has to generate the energy for the spark as it doesn't come from a battery no more.

Make sure your bike rests securely on her stand, preferably on an elevated work bench and that you have good access to the generator side of the engine. You will have to move the front wheel fork for good access.

Disconnect your battery and take it out of the motorcycle. Note, that you are now installing a 12 volt system. So you will either need a 12 volt battery or you use the option of driving without. You will still have to replace all lightbulbs to 12 volt ones however in that case too. The horn may stay at 6 volts. For driving without battery, please observe our [information on driving without battery](#). If there are side indicators at your bike AND you want to drive without battery, best [order our alternative regulator with inbuilt condenser](#) or install an [electrolytic capacitor](#) (min. 20.000 μ F/16V) in the place of the battery. The alternative regulator has the added advantage of being small. It does not support however a charge control light.

Technically it is possible to drive your bike without the battery. But consult your local road traffic regulations.

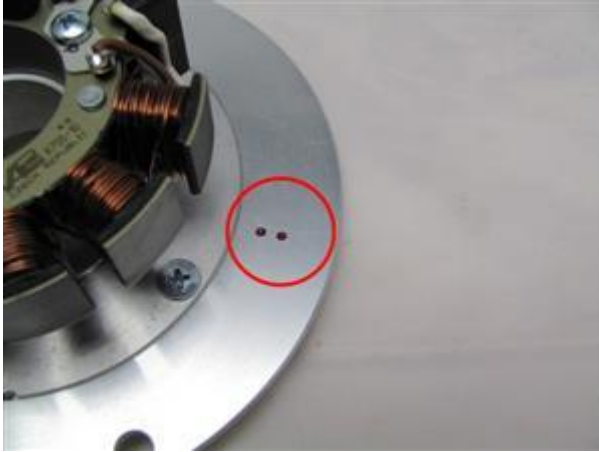
Take the dynamo cover from the engine and disconnect the wires from the stock dynamo.

Pull all the cables out of the engine casing, but do not cut off any cables yet (except the black cable from pin 30 to the battery).



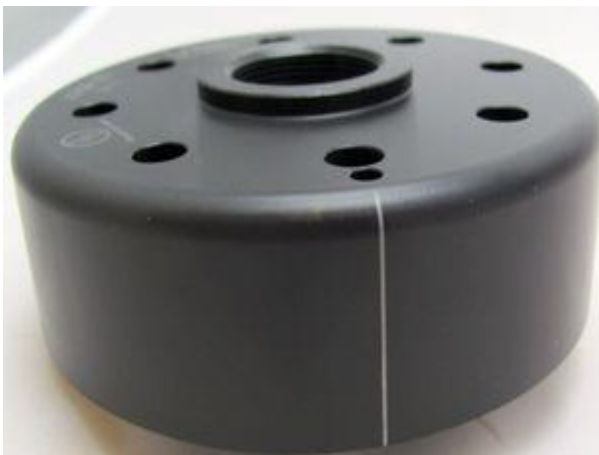
Unscrew the mounting screw that holds the armature on the crank shaft. It helps to engage the first gear, so you have stability. Take the three mounting stator screws off and pull the dynamo off. For this you will need the puller tool M8x90. Alternatively do as the stock BMW manual suggests: "... introduce a piece of round steel (40mm x 5.5mm) into the central hole of the armature and press it down with a screw M8."

Circuit breaker and centrifugal advance unit on the cam shaft will be not used any more. You may remove these parts or leave them there. Please clamp-off only the ignition coil cable.



Have a look at the new stator unit. You will find there on the base plate a little red marking. (In the picture here encircled red.)

This is an ignition marking.



Have a look at the new rotor (flywheel). You will find on its circumference a small laser-etched line.

This is a ignition marking too.

They have to align at TDC (not at point of ignition).



Lead the stator harness from the inside through the cable hole at the engine.

Take care not to damage the stator.



Then set the stator unit into the engine. Take care that the fixing holes of the case align with the holes of the stator unit. Screw it down with the 3 screws M6x20.



Pull the enclosed grommet over the cable and push it into the engine opening (a drop of oil will help).

Remove the spark plug Place the rotor loosely onto the crank and check that it may move freely above the statorbase.

Bring the piston in TDC position. Put the new rotor handtight on the crank shaft for turning the shaft.



With shaft in TDC position, take the rotor carefully off again without changing the crank's position. Reset it onto the crank in such a way that the marking on the rotor aligns with the marking on the stator. If there is any change in the crank's position, you have to start again.

In that position fasten the rotor carefully with the screw M8x30. Please do not forget to use the washer. Screw the spark plug back in the cylinder.

Now you have adjusted the ignition on standard value. Theoretically you can adjust that to any position, you have only to turn the rotor (without changing the crank shaft position).

- turning the rotor clockwise - brings an earlier ignition
- turning the rotor anticlockwise - brings a later ignition

Using grossly different settings than advised may result in engine damage.



Fasten the new ignition coil beneath the tank. At some chassis is there a holder lug. If not, you can help yourself with [a self-made bracket](#) or wire binders.

The new advance unit unit and the regulator/rectifier can be also fitted inside the battery- or tool compartment

After the installation of the advance unit, take a look at the little blue dip-switch block on the upper narrow side of the unit. There are 4 small switches for choosing the ignition advance curves.



The curve for the R27 gives full advance of 38 degrees at 3000 revs and starts at 9 degrees at idling. To prevent kickbacks ignition is set to 2 degrees after TDC at moment of kickstart.

The curve activated with the setting shown here left




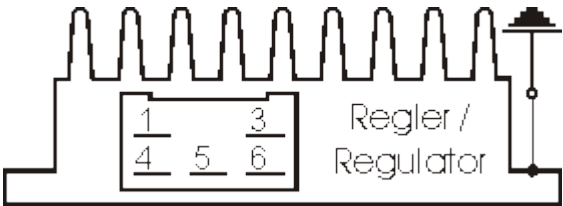
This gives very much the same curve, except that at kick moment it is not 2 degrees after TDC, but 2 degrees before.

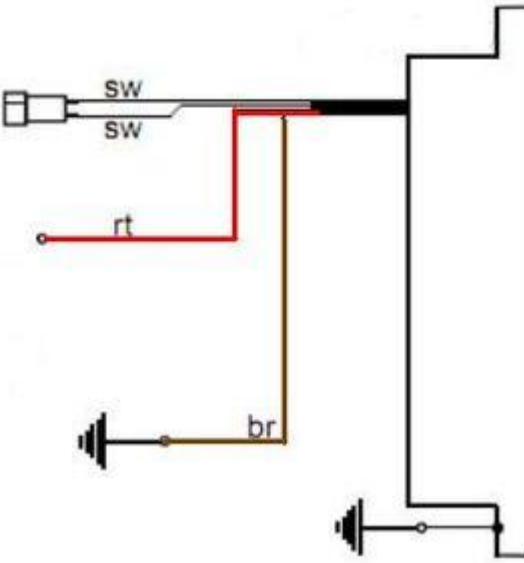

Connect the parts as shown in the respective wiring diagram!

For our [standard DC regulator \(95 22 699 06\)](#), use the [wiring diagram 91ik12](#):

For our [DC regulator with built in smooting condenser \(73 00 799 50\)](#), use the [wiring diagram 91ik_102](#):

*	<p>To facilitate wire exit through the often small openings in the engine casing, the plastic plug of the generator's wiring that leads to the advance unit have not been put onto the wire terminal. You should place the plug there only once all has been properly installed on the engine side.</p>	
		<p>Look for the advance unit with its female plug and the two wires (red and white).</p> <p>Put the provided 2-position plug housing onto this plug and insert the two wires (red and white) from the generator. Make sure that the terminals engage securely in the housing and that you connect:</p> <ul style="list-style-type: none"> • white to white • red to red
	<p>Should you need (or want) to get the terminals out of the plug housing again, enter a paper clip from front next to the terminals and push the little barb aside. Than pull the wire out.</p>	
*	<p>The brown wires from the new generator and the advance unit with the round eye terminals ...</p>	<p>... have to be screwed to the holder frame of the ignition coil (ground). This connection is very important. Please don't depend on the frame as <i>the</i> earth-connection. Varnish, oil and dirt prevent often a good contact!</p>
*	<p>The grey resp. green cable of the advance unit ...</p>	<p>... is the output of the to the ignition coil and gets connected to the single male terminal there.</p>
*	<p>Important! Avoid prolongation of the green wire between advance unit and ignition coil. This may lead to ignition trouble.</p> <p>Never run the high tension cable and the cables from the generator to the advance and/or the grey wire from the advance to the ignition coil closely in parallel (say in one shielding). This will trigger back coupling that disturbs ignition and might even damage the advance unit.</p>	

<p>The blue/white wire at the advance unit. This is the kill (cut-off) wire.</p> <p>Note: Should you experience ignition failures, disconnect as a first measure this blue wire. In many cases that will permit you to get mobile again (particulars see: technical help)!</p>	<p>Connected to ground - it will stop ignition!</p> <p>This type of wiring is used in motorcycles which originally already had magneto ignition and therefore switched off by shortcircuiting against ground.</p> <p>Those vehicles have by design a main lock (or some kill switch) that connects a pin to ground when in OFF position (German bikes: pin 2). The blue/white wire of the ignition coil will be connected here. In that way the cut-off works like previously.</p>
<p>* Connecting VAPE alternator to lighting circuit (via regulator):</p>	
	<p>The 2 black wires running from the stator coil carry the voltage for lights, horn, flashers etc. They have nothing to do with ignition.</p> <p>This voltage (something between 10 and 50 volts AC) has however to be stabilized (regulated) and for most uses rectified into direct current (DC) as it primarily is alternating current (AC).</p> <p>For this we offer 2 different regulators:</p>
<p>⚠ Attention: Any confusion between plus and minus (with the DC versions) leads to immediate destruction of the regulator. This will not constitute a warranty case as it is negligence! One can recognize a burnt regulator mostly by its sharp smell.</p>	
<p>* Regulator type 1: with standard DC regulator (95 22 699 06), use the wiring diagram 91ik12:</p>	
	<p>The new regulator/rectifier has a compact plug with 6 positions, of which <u>one</u> is not used. A female plug cover fitting to this plug is delivered. Into this female plug you have to insert the following wires (which have terminals that snap into the plug):</p>
<p>The two black cables leading from the generator ...</p>	<p>... connect to pins 1/4 of the new regulator (from there equally black wires lead inside the unit). It does not matter which wire connects to which of the both terminals (1/4) as they carry alternating current.</p>
<p>The new brown cable with the round eye terminal ...</p>	<p>... connects pin 3 of the regulator unit (from there equally a brown wire goes inside the unit) with the negative pole of the battery or (in case you drive without battery) to ground (chassis).</p>

<p>The new red cable with the round eye terminal ...</p> <p style="text-align: center;">Take care:</p> <p>Wrong polarity will damage the electronics!</p>	<p>... connects to pin 5 of the new regulator (from there equally a red wire goes inside the unit). Here your regulated positive voltage comes out to connect to battery plus, or (in case you drive without battery) to the voltage input terminal of the main switch (ignition lock, German bikes: pin 51/30).</p>
<p>Make sure that you have a 8A-fuse between battery and vehicle circuitry.</p>	
<p>The green/red wire at pin 6 of the new regulator ...</p> <p style="text-align: center;">Remark:</p> <p>Until November 2007 this wire has been a single wire outside the compact plug.</p>	<p>... is for the charge control light. You connect there the wire that formerly did run from the control light to the original regulator.</p> <p>Sure that this control only functions with a battery present. Should you drive without battery but still connect the wire, you will see that the light glows even as the generator generates voltage. So without battery, do not connect it.</p>
<p>The charge light control function is based on a transistor switch and is an additional function. Even if that should fail, the regulator might still be in ok working condition. Simple check: have the engine running, turn lights on, disconnect the battery. If you have bright lights the unit is ok.</p>	
<p>* Regulator type 2: with DC regulator with built in smooting condenser (73 00 799 50), use the wiring diagram 91ik 102:</p>	
	 <ul style="list-style-type: none"> • the 2 black (sw) wires are the AC input from the alternator (as it is AC it does not matter which black to which black) • the red (rt) wire is the 12V DC output plus • the brown (br) wire is ground, internally connected to housing
<p>* Screw the high tension (ignition) cable ...</p>	<p>... into the ignition coil and pull over the rubber seal before mounting the coil (it will be easier).</p>

<p>Please do not use any spark amplifying cables, such as "Nology supercables" or "hot wire". This will disturb the system and possibly damage it.</p>	<p>Please do use the cable arriving with the pack and not any old cable.</p>
<p>You will do yourself a favour to treat your bike to new spark plugs and spark plug sockets (preferably some between 0-2kOhm). Plenty of problems are to be traced back to "apparently good" (even completely "brand-new") sparks plugs, terminals and cables. Do not use spark plugs with an intern suppression resistor. NGK (e.g.) offered such spark plugs coded with an "R" (for resistor).</p>	
<p>Finally - and before installing the battery and before the first kickstart - please re-check carefully all connections and fitments against the wiring diagram. Do check battery and light bulbs for correct voltage (12V). * Should something not work, please consult our trouble-shooting guide on our homepage. As a first step disconnect the blue wire from the coil and re-test.</p>	
<p>* IMPORTANT: During crank shaft repair the dynamo shaft is often machined and gets shorter. The result is a rotor sitting lower, possibly touching now with its rivets the stator coil. The result is a destroyed stator and ignition failure. For more detail and how to check see (online) here.</p>	
<p>Important safety and operating information</p>	
<p>Safety first! Please observe the general health and safety regulations motor vehicle repair (MVR) as well as the safety information and obligations indicated by the manufacturer of your motorcycle. # The timing marks on the material are for general guidance only during first installation. Please check after assembly by suitable means (stroboscope) that settings are correct to prevent damage to the engine or possibly even your health. You alone are responsible for the installation and the correctness of settings.</p>	
<p># <u>Ignition systems generate high tension!</u> With our material right up to 40,000 Volts! This may, if handled carelessly, not only be painful, but outrightly <u>dangerous</u>. Please do keep a safe distance to the electrode of your spark plug and open high tension cables. Should you need to test spark firing, hold the spark plug socket securely with some well insulating material and push it firmly to solid ground of the engine block. Never pull sparkplug caps when engine is running. Wash your vehicle only with engine at standstill and ignition off.</p>	
<p># Should you have received in the kit HT cables with a fixed rubber boot(which does not contain a resistor) you might have to use spark plugs with an inbuilt resistor (or replace the cap with one containing a resistor) to comply with your local laws.</p>	
<p># After installation, please <u>check tightness of all screws, even those preinstalled</u>. If parts get loose during run, there will be inevitably damage to the material. We pre-assemble screws only loosely.</p>	
<p># Give the newly installed system a chance to work, before you start to check and test values, or what is worse apply changes to it.</p>	

	<p>Our parts have been checked before delivery to you. You will not be able to check much anyway. At any rate do refrain from measuring the electronic components (such as ignition coil, regulator and advance unit). You risk severe damage to the inner electronics there. You will not get any tangible results from the operation anyway. Bear in mind that also your carburetor, your spark plugs and spark plug sockets (even if completely new) might be the reason for malfunction. The general experience with our systems is that the carburetor will have to be re-adjusted to lower settings. Should the system not start after assembly, first disconnect the blue (or blue/white) cut-off wire directly at the ignition coil (or in some cases advance unit) to eliminate any malfunction in the cut-off circuitry. Check ground connections carefully, make sure there is a good electrical connection between frame and engine block.</p> <p>In case of troubles, please consult our Knowledge Base first before you send off the material to us for checking</p>
#	<p>The spark of classic, points based ignition systems has with about 10,000 Volts comparatively little energy and looks therefore yellow and fat (which however makes it highly visible). The spark from our system is a high energy spark with up to 40,000 Volts and therefore is needle thin focused in form, and blue in colour, which makes it not so visible. Furthermore you get spark only at kick-start operated speeds and not by pushing the kick-lever down slowly with your hand (as you might get with battery based ignitions).</p>
#	<p>Systems using a twin outlet ignition coils have a few peculiarities. Please observe that during tests on one side, the other has either to be connected to an fitted spark plug or securely earthed/grounded. Otherwise there will be no spark on either side. Also with such open exits long and dangerous sparks may fly all over the coil.</p>
#	<p>Never do electric arc welding on the bike without completely disconnecting all parts containing semiconductors (ignition coil, regulator, advance) stator and rotor need not be taken off. The same is true for soldering. Before touching electronics disconnect the soldering iron from mains! Never use copper putty on spark plugs.</p>
#	<p>Electronics are very sensitive to wrong polarity. After work on the system, do check correct polarity of the battery and the regulator. Wrong polarity creates short circuits and will destroy the regulator, the ignition coil and the advance unit. As a rule, wiring will always be colour to colour. Instances, where colour jumps between wires are expressly mentioned in our instructions.</p>
#	<p>When you handle the new rotor, take care not to damage its magnets. Refrain from direct blows to the circumference of the rotor. When transporting never put the rotor over the stator. Observe our information relative to transport of the material.</p>
#	<p>Do not use spark plug sockets with a resistance of more than 5kOhm. Better use 1 or 2kOhm ones. Bear in mind that spark plug sockets do age and thereby increase their internal resistance. Should an engine start up only when cold, a defective spark plug socket and/or spark plug is very probably the cause. In case of problems check high tension cables too. Never use carbon fibre HT-cables, never use so called "hot wires" which promise to increase spark.</p>
#	<p>It is a good idea to cover the rotor in a thin layer of oil to reduce the risk of corrosion.</p>

#	Never use a claw puller or a hammer to disengage the rotor. Its magnets might become loose in the event. We offer a special puller for disengaging the new rotor again (see assembly instruction)!
#	Should the motorcycle not be in use for some longer period, please disconnect the battery (so existing) to prevent current bleeding through the diodes of the regulator. Though, even a disconnected battery will empty itself after a while.
#	Please do observe these remarks, but at the same time, don't be afraid of the installation process. Remember, that before you, thousands of other customers have successfully installed the system. <i>Enjoy driving your bike with its new electric heart!</i>