

System 79 01 799 00

=> [€/€](#)



generator/electronic ignition for 1970s  
Cooper motorcycle by Moto Islo

Magnet based generator with integrated fully electronic ignition. Output at 12V/100W DC. Maintenance-free solid state ignition with own power supply from within the system. Replaces [stock magneto ignition](#).

No changes on engine casing needed. The system is technically capable of running [without battery](#).

advantages over stock system:

- all parts are new
- solid light output
- very stable ignition with high energy spark
- better starting and fuel burning
- no problem with points anymore

documentation:

- [assembly instructions](#)
- [wiring diagram](#)
- [parts in the pack \(photo\)](#)

photos:

- [the stock system](#)
- [the empty engine](#)
- [new system at engine](#)



M790179900

**If you can install and tune a stock ignition and possess basic mechanical skills, you can install a VAPE system!**

**If you never have worked on your ignition, better have it done by someone who knows.**

VAPE can not monitor the compliance to those instructions, nor the conditions and methods of installation, operation, usage and maintenance of the system. Improper installation may result in damage to property and possibly even bodily injury. Therefore we assume no responsibility for loss, damage or cost which result from, or are in any way related to, incorrect installation, improper operation, or incorrect use and maintenance. We reserve the right to make changes to the product, technical data or assembly and operating instructions without prior notice.

**Please read these instructions fully and carefully before starting work on your motorcycle**

Please bear in mind that [any modification of the material as well as own repair attempts which have not been agreed with VAPE may result in a loss of warranty. Do not cut off wires. This leads to a loss of reverse polarity protection and often results in damage to electronics.](#)

Also, please take note of the information provided on the information page for this system. Check that what you have bought really corresponds to the motorcycle you have. Wrong ignition settings may damage your engine and even hurt you during kickstart (violent kickbacks). Be careful during the first test runs. If needed change settings to safer values (less advance). During assembly check carefully that the [rotor \(flywheel\) does not touch the stator coils or anything else](#), which may happen due to various circumstances and lead to severe damage.



**IMPORTANT:**

**Designated use**

This system is designated to replace stock dynamo/alternator & ignition systems in vintage and classic motorcycles [whose engine characteristics have not been modified aftermarket](#). This system is not a tuning system and it will not bring significant increases in engine output. It does however significantly enhance roadworthiness and comfort by offering better lighting, better function of side indicators and horn and, compared with the aging stock systems, increased reliability. As our system does not tamper with engine characteristics it does not increase emission of gaseous pollutants and noise. In most cases emission of pollutants should even be reduced due to better combustion. If used as designated the system therefore will not normally infringe the existing legal status of the motorcycle (this statement is valid for Germany, for other countries, please check locally against your road licensing regulations). This system is not suitable for use in competition events. If used other than the designated way, warranty will be voided and it might well be that you do not obtain the desired results or, worst you lose legal roadworthiness.

**The charging system is only suitable for use with rechargeable 12V (6V systems 6V) lead-acid batteries** with liquide electrolyte or sealed lead-acid batteries, AGM, Gel. [It is not suitable for use with nickel-cadmium, nickel-metal-hydride, lithium-ion or any other types of rearchable or non rechargeable batteries.](#)

This is a [replacement system and not a copy of the stock material](#). The parts in this system therefore look different and might fit differently (notably ignition coil and regulator) requiring some adaptation by you.


**During assembly imperatively start with assy of engine based parts** to see that those really fit before you start fitting the external parts. In many cases customers assemble those first and thereby often [modify them in breach of warranty](#) which renders them unfit for renewed sale. [Replacing old ignition systems is not a matter of taking something from a supermarket shelf as there have been very many types, versions and possibly unknown aftermarket modifications which harbour plenty of room for error.](#)

Our systems are [NOT tested for use with third party electronic devices \(such as GPS, mobile phones, LED lighting etc\)and may cause damage to such parts.](#) Possibly existing [electronic tachometers](#) will not work with the new system. Read our [information for suitable solutions](#). Possibly existing safety switches and electronic valve controls are not supported. It might be that your motorcycle was originally equipped with an ignition that did limit top speed for legal reasons. The new system does not have such a facility, so check your legal situation beforehand.

If you have no expertise for the installation have it done by an expert or at a specialist's workshop. Improper installation may damage the new system and your motorcycle, possibly even lead to bodily harm.

Before you order a system, please check whether a [puller tool](#) for the new rotor is included in the kit. If not, better order it at the same time. You might want to order light [bulbs](#), [fuse](#), horn, [flasher unit](#) etc. Never use anything other than the recommended puller tool to pull the new rotor again. Damage to the rotor as a result of use of other tools or methods is not covered by warranty.

The rotor is sensible to blows (including during transport). Before assembly, please always check for damage (on rotor without magnet plastification try to push the magnets aside with your fingers). After impact the glued in magnets might have broken loose, sticking to the rotor solely by magnetic force, so that one does not notice right away. During engine run the damage would be considerable. Before placing the rotor onto the engine, please make sure that its magnets have not

	collected any metal objects such as small screws, nuts and washers. That equally would lead to severe damage.
	<p><b>If you have access to the Internet, best view those instructions online.</b> You get larger and better pictures by clicking onto them and possibly updated information. System list at <a href="http://www.powerdynamo.biz">http://www.powerdynamo.biz</a></p>



**You should have received those parts:**

- rotor
- pre-assembled stator unit
- regulator/rectifier
- ignition coil & ht-cable
- battery- & kill wire
- cable binders, screws



To disengage your new rotor again, you will need a puller M27x1.25 (part-no.: 99 99 799 00 - **Not provided!**).

**Note:** Never use a claw puller, a hammer or any other device, that will shake the magnets off.

Ensure that the engine is secure and at a comfortable work height. It is possible to do the work with the engine still in the frame but insure that the motorcycle is stable and not in danger of tipping over. Remove the fuel tank, the battery cover and the tool box to make the installation easier.



Remove the engine cover. Then remove the original generator and ignition system. These parts will not be needed with the new system but could be retained to restore the motorcycle to original condition in a future restoration.

Take off the woodruff key that aligned the crank shaft and the ignition system. The woodruff key will not be needed for the new system.

**Remark:** This and the following photos are showing a similar engines!

You will have to remove the stator from the base plate in order to install the base plate onto the engine. Before removing the stator from the plate, carefully note how it is aligned on the plate. When you reinstall the stator onto the base plate please ensure, that it is reinstalled correctly since the ignition timing would be off by 120 degrees if the stator were installed incorrectly.



The unit will be delivered preassembled, as in the photo.

For mounting the plate at the engine, you have to take off the 3 hex screws and lift the stator a little (1cm) from its base to gain access to the holder screws below.

Take care not to damage the paint insulation of the stator coil.



Install the base plate and the stator tower on the engine case with the three provided M4x16 screws and washers. Examine the base plate of the new stator.

On the edge of the base plate, you will find a mark (highlighted here by a circle). This is a timing mark - it will be used to align the rotor when it is installed.



Pictures show similar engine! At your engine the wire outlet is approx. at 2 o'clock. So please mount the stator in a way that the wire harness goes straight through the outlet at the engine.

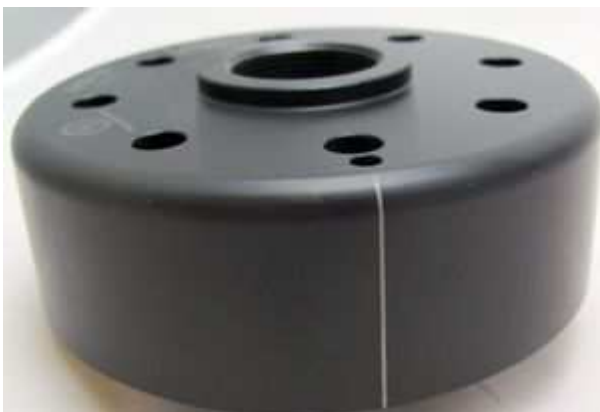


Now you have to replace the stator on the ground plate. Take care, that no cable is pinched. The coil has to be fitting good on the ground plate - nearly "hearable engage". If it ain't so, and the coil fits "soft" on the ground plate, is a cable in the way and there is a risk of damaging by contact of the rotor.

(Picture shows similar engine!)



Unhopefully the ground plate's ignition marking isn't visible now. You have to either continue the marking to the motor or notice a marked point at the motor that is visible beyond the rotor.



Now examine the rotor. Notice that there is a small line inscribed on the exterior of the rotor housing. This is also a timing mark. It will be used to align the rotor during installation.



Remove the spark plug and bring the piston into ignition position. For better control when turning the engine over, shift the transmission into fourth gear and use the rear wheel to rotate the engine. Alternatively, use the new rotor to turn the engine by attaching it to the crankshaft and turning it until the piston is at top dead center.

With the engine in ignition position, carefully replace the rotor on the crankshaft, aligning the timing mark on the rotor with the timing mark on the stator plate. Carefully tighten the rotor with the mounting nut and the provided washer making sure that neither the rotor nor the crankshaft moves while tightening the nut. If either the rotor or the crankshaft moves, the timing will be incorrect and it will be necessary to remove and reinstall the rotor.



When the rotor is tightened with the stock rotor nut, replace the spark plug. If you used the rear wheel to rotate the engine, shift back to neutral.

**Hint:** Here you also see how the wire harness should be led through the outlet.

With that the work on the engine is finished. Put the spark plugs back.



Remove the original ignition coil from the frame as it will be replaced by a new coil. You may want to keep the original parts for future reinstallation, if you are interested in restoring the motorcycle to original condition at some time in the future. Otherwise, they will not be needed again. Disconnect and remove the battery. A battery will not be needed after the installation, but the old battery can be replaced by a 12V battery if you want to power your lights and horn without running the engine. Attach the enclosed spark plug wire to the new

coil and attach the new coil to the frame. The new ignition coil can be mounted in the same location as the original coil. Using a L-shaped bracket, the new solid state regulator can be mounted to the horn mounting tab below the coil. If a battery won't be used with the new system, the regulator could also be mounted where the battery was housed. Some customers have mounted the electronics inside a hollowed out battery to maintain the stock appearance.

Connect the parts as shown in [wiring diagram 71ik\\_102](#):

\* To facilitate wire exit through the often small openings in the engine casing, the plastic plug of the generator's wiring that leads to the ignition coil has not been put onto the wire terminal. You should place the plug there only once all has been properly installed on the engine side.



Look for the ignition coil with its female plug and the two wires (red and white).

Put the provided 2-position plug housing onto this plug and insert the two wires (red and white) from the generator. Make sure that the terminals engage securely in the housing and that you connect:

- white to white
- red to red

Should you need (or want) to get the terminals out of the plug housing again, enter a paper clip from front next to the terminals and push the little barb aside. Then pull the wire out.

The brown wire from the new generator with the round eye terminal has to be screwed directly to the holder frame of the ignition coil (ground).

**Take note! disrespecting is the most frequent cause for ignition problems !! Without this direct connection the system does not work or not work for long without problems. Please do not rely on the frame for ground. Paint, oil and dirt often prevent good contact!**



*		<p>The new regulator/rectifier has 4 wires</p> <ul style="list-style-type: none"> <li>• 2 black ending in a plastic plug for the AC input from the 2 black generator wires</li> <li>• 1 red with a plastic plug which outputs plus</li> <li>• 1 brown with a plastic plug being ground (minus)</li> </ul>
	<p>The two black cables leading from the generator ...</p>	<p>... should be first introduced into the supplied twin plastic plug housing. This housing connects to the plastic plug at the end of the 2 black wires on the regulator. It does not matter which black is at which side, as there is AC.</p>
	<p>The brown cable from the regulator ...</p>	<p>... should connect to either battery minus or good ground if there is no battery.</p>
	<p>The red cable from the regulator ...</p> <p style="text-align: center;"><b>Take care:</b> Wrong polarity will damage the electronics!</p>	<p>... should connect to either battery <b>12V PLUS</b> or if there is no battery to the wiring that runs to your consumers (normally main switch intake pin).</p>
	<p>If you use a battery, make sure that you have a <b>15A-fuse</b> between battery and vehicle circuitry.</p>	
	<p>There is NO facility for a charge control light without battery this will not work anyway. The regulator has an inbuilt high potency condenser to smoothen voltage. This will make sure that your side indicators (flashers) and horn will work correctly even without battery.</p>	
*	<p>Remains the blue (sometimes blue/white) wire at the ignition coil. This is the kill (cut-off) wire.</p> <p style="text-align: center;"><b>Note:</b> Should you experience ignition failures, disconnect as a first measure this blue wire. In many cases that will permit you to get mobile again (particulars see: <a href="#">technical help</a>)!</p>	<p><b>Connected to ground - it will stop ignition!</b></p> <p>This type of wiring is used in motorcycles which originally already had magneto ignition and therefore switched off by shortcircuiting against ground.</p> <p>Those vehicles have by design a main lock (or some kill switch) that connects a pin to ground when in OFF position (German bikes: pin 2). The blue(/white) wire of the ignition coil will be connected here. In that way the cut-off works like previously.</p>
*	<p>Screw the high tension (ignition) cable ...</p> <p style="text-align: center;"><b>Please do not use</b> any spark amplifying cables, such as "Nology supercables" or "hot</p>	<p>... into the ignition coil and pull over the rubber seal before mounting the coil (it will be easier).</p>

<p>wire". This will disturb the system and possibly damage it.</p>	<p>Please do use the cable arriving with the pack and not any old cable.</p>
<p>You will do yourself a favour to treat your bike to new spark plugs and spark plug sockets (preferably some between 0-2kOhm). Plenty of problems are to be traced back to "apparently good" (even completely "brand-new") sparks plugs, terminals and cables.  <b>Do not use</b> spark plugs with an intern suppression resistor. NGK (e.g.) offered such spark plugs coded with an "R" (for resistor).</p>	
<p>* Finally - <b>and before installing the battery and before the first kickstart</b> - please re-check carefully all connections and fitments against the wiring diagram. Do check battery and light bulbs for correct voltage (12V).</p> <p>Should something not work, please consult our <a href="#">trouble-shooting guide</a> on our homepage. As a first step disconnect the blue wire from the coil and re-test.</p>	
<p>* <b>IMPORTANT:</b> During <b>crank shaft repair</b> the dynamo shaft is often machined and gets shorter. The result is a rotor sitting lower, possibly touching now with its rivets the stator coil. The result is a destroyed stator and ignition failure.          For <a href="#">more detail and how to check see (online) here</a>.</p>	
<p><b>Important safety and operating information</b></p>	
<p>Safety first! Please observe the <a href="#">general health and safety regulations motor vehicle repair (MVR)</a> as well as the safety information and obligations indicated by the manufacturer of your motorcycle.</p> <p># The timing marks on the material are for general guidance only during first installation. Please check after assembly by suitable means (stroboscope) that settings are correct to prevent damage to the engine or possibly even your health. You alone are responsible for the installation and the correctness of settings.</p>	
<p># <u>Ignition systems generate high tension!</u> With our material right up to 40,000 Volts! This may, if handled carelessly, not only be painful, but outrightly <u>dangerous</u>. Please do keep a safe distance to the electrode of your spark plug and open high tension cables. Should you need to test spark firing, hold the spark plug socket securely with some well insulating material and push it firmly to solid ground of the engine block.</p> <p>Never pull sparkplug caps when engine is running. Wash your vehicle only with engine at standstill and ignition off.</p>	
<p># Should you have received in the kit HT cables with a fixed rubber boot(which does not contain a resistor) you might have to use spark plugs with an inbuilt resistor (or replace the cap with one containing a resistor) to comply with your local laws.</p>	
<p># After installation, please <u>check tightness of all screws, even those preinstalled</u>. If parts get loose during run, there will be inevitably damage to the material. We pre-assemble screws only loosely.</p>	
<p># Give the newly installed system a chance to work, <a href="#">before you start to check and test values</a>, or what is worse apply changes to it.</p> <p>Our parts have been checked before delivery to you. You will not be able to check much anyway.  <b>At any rate do refrain from measuring the electronic components (such as ignition coil,</b></p>	

	<p><b>regulator and advance unit). You risk severe damage to the inner electronics there. You will not get any tangible results from the operation anyway.</b> Bear in mind that also your carburetor, your spark plugs and spark plug sockets (even if completely new) might be the reason for malfunction. The general experience with our systems is that the carburetor will have to be re-adjusted to lower settings. Should the system not start after assembly, first disconnect the blue (or blue/white) cut-off wire directly at the ignition coil (or in some cases advance unit) to eliminate any malfunction in the cut-off circuitry. Check ground connections carefully, make sure there is a good electrical connection between frame and engine block. In case of troubles, please consult our <a href="#">Knowledge Base</a> first before you send off the material to us for checking</p>
#	<p>The spark of classic, points based ignition systems has with about 10,000 Volts comparatively little energy and looks therefore yellow and fat (which however makes it highly visible). The spark from our system is a high energy spark with up to 40,000 Volts and therefore is needle thin focused in form, and blue in colour, which makes it not so visible. Furthermore you get spark only at kick-start operated speeds and not by pushing the kick-lever down slowly with your hand (as you might get with battery based ignitions).</p>
#	<p>Systems using a <a href="#">twin outlet ignition coils</a> have a few peculiarities. Please observe that during tests on one side, the other has either to be connected to an fitted spark plug or securely earthed/grounded. Otherwise there will be no spark on either side. Also with such open exits long and dangerous sparks may fly all over the coil.</p>
#	<p>Never do electric arc welding on the bike without completely disconnecting all parts containing semiconductors (ignition coil, regulator, advance) stator and rotor need not be taken off. The same is true for soldering. Before touching electronics disconnect the soldering iron from mains! <a href="#">Never use copper putty on spark plugs.</a></p>
#	<p>Electronics are very sensitive to wrong polarity. After work on the system, do check correct polarity of the battery and the regulator. Wrong polarity creates short circuits and will destroy the regulator, the ignition coil and the advance unit. As a rule, wiring will always be colour to colour. Instances, where colour jumps between wires are expressly mentioned in our instructions.</p>
#	<p>When you handle the new rotor, take care not to damage its magnets. Refrain from direct blows to the circumference of the rotor. <b>When transporting never put the rotor over the stator.</b> <a href="#">Observe our information relative to transport of the material.</a></p>
#	<p>Do not use spark plug sockets with a resistance of more than 5kOhm. Better use 1 or 2kOhm ones. Bear in mind that spark plug sockets do age and thereby increase their internal resistance. Should an engine start up only when cold, a defective spark plug socket and/or spark plug is very probably the cause. In case of problems check high tension cables too. Never use carbon fibre HT-cables, never use so called "hot wires" which promise to increase spark.</p>
#	<p>It is a good idea to cover the rotor in a thin layer of oil to reduce the risk of corrosion.</p>
#	<p>Never use a claw puller or a hammer to disengage the rotor. Its magnets might become loose in the event. We offer a special puller for disengaging the new rotor again (see assembly instruction)!</p>

#	Should the motorcycle not be in use for some longer period, please disconnect the battery (so existing) to prevent current bleeding through the diodes of the regulator. Though, even a disconnected battery will empty itself after a while.
#	Please do observe these remarks, but at the same time, don't be afraid of the installation process. Remember, that before you, thousands of other customers have successfully installed the system. <b><i>Enjoy driving your bike with its new electric heart!</i></b>

